



BUSINESS PROGRAM




THAILAND 2020

WE ARE

Deliverree is a full service logistics solution powered by sophisticated technology that allows your business to book and manage FTL transport of goods and cargo.

Our wide selection of heavy trucks down to compact vehicles will pickup anywhere in Bangkok Metro or Chonburi and deliver anywhere in Thailand.

FLEET
 **15k**

FTL LOADS
 **1.1M**

CLIENTS
 **38k**

INSTALLS
 **500k**

OFFICES
 **2**

TEAM
 **70**

BENEFITS

An invitation-only program for businesses featuring tailored services, most of them free, to meet the demanding needs of enterprise and SME customers.

FREE	
Monthly Invoicing	14 day payment terms
Commercial Insurance	500,000 ₱ per booking from AXA
VIP Hotline	Call, chat or email daily (5AM to midnight)
Process Mapping	Driver instruction customized for your requirements
Your Logo	Prominently displayed in app signature section
Enterprise Dashboard	Specialty dashboard for batch management
Custom Analytics	Custom KPI dashboard just for you
PAID	
COD Return 0.2% of cash collected (Min. 50 ₱) (Insured, next business day)	POD Document Return 50 ₱ per booking (Insured, next 3 business days)

GET STARTED



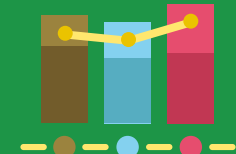
FREE TO JOIN AND LEAVE ANYTIME



NO PROGRAM OR MEMBER FEES



MOST PROGRAM BENEFITS ARE FREE



MONTHLY ACTIVITY REQUIREMENT



APPLY FOR YOUR BUSINESS HERE



To remain in the program and continuing reaping its many free benefits, you must maintain minimum monthly activity of 10 bookings or 3,000 ₱ in billings.



OUR FLEET



6-WHEEL TRUCK • 4 TON • 21 M³
LxWxH: 500x200x210 CM



CHILLED TRUCK • 1 TON • 5 M³
LxWxH: 210x170x140 CM



BOX TRUCK • 1.5 TON • 6.4 M³
LxWxH: 210x170x180 CM



PICKUP TRUCK • 1 TON • 6.5 M³
LxWxH: 190x170x200 CM



ECO CAR • 100 KG • 0.7 M³
LxWxH: 100x90x75 CM



MOTORCYCLE • 30 KG • 0.1 M³
LxWxH: 40x40x40 CM



MORE FLEET DETAILS



OUR PRICES

Choose from different booking types, each with its own price method. For quick & schedule, each vehicle has a start price and price per km thereafter. For full day, each vehicle has a fixed price for set hours varying by city. For long haul, each vehicle and key route has a fixed price.



QUICK & SCHEDULE

Starting price plus price per km



FULL DAY

Fixed price for 9 or 8 hours depending your city



LONG HAUL

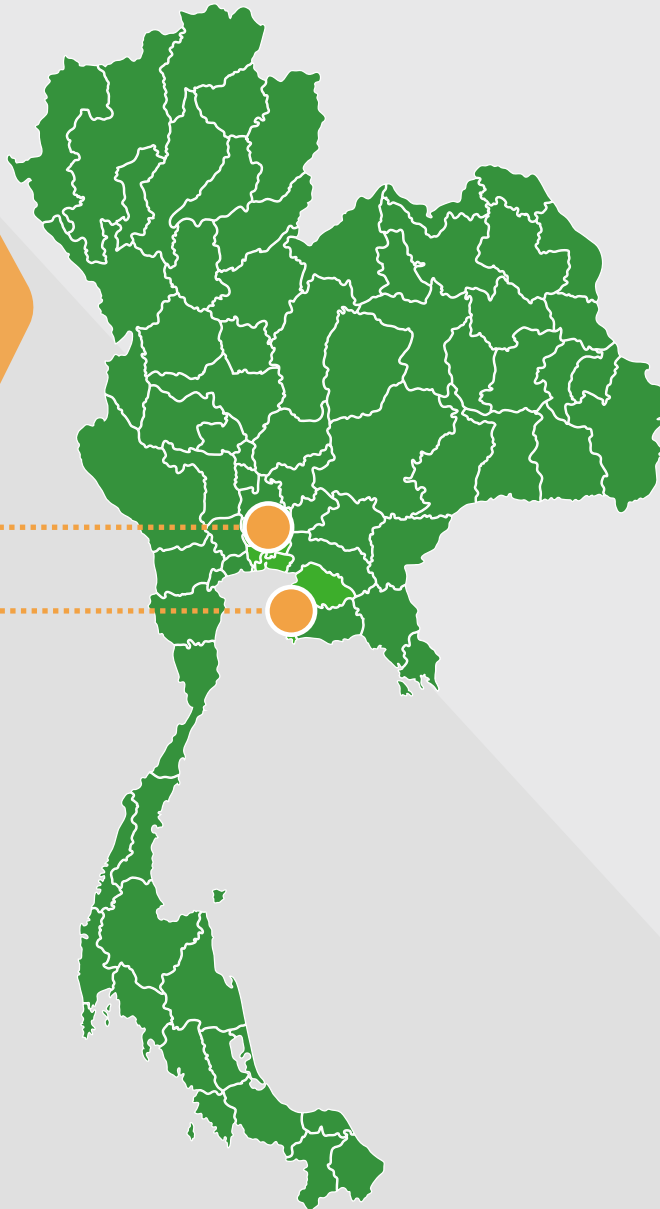
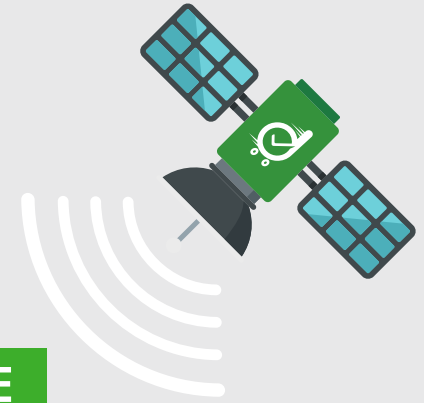
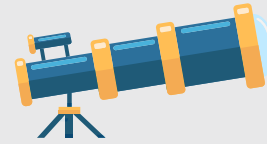
Fixed prices based on route



**INSTANT QUOTE
FROM OUR WIZARD**



OUR SERVICE AREA



PICKUP ZONE

- Bangkok
- Chonburi
- Nakhon Pathom
- Nonthaburi
- Pathum Thani
- Samut Prakan
- Samut Sakhon

DESTINATION ZONE

Anywhere in Thailand



OUR GROWING TEAM IN THAILAND

WE ARE WORKING HARD TO
BRING YOU MORE VEHICLE SELECTIONS,
SERVICE OPTIONS, AND LOCATIONS IN 2020



OUR LEADERS



GROUP CEO
Tom Kim

Tom manages Deliverree's regional business with over 350 staff and 55,000 vehicles across Indonesia, Thailand, Philippines and Vietnam.



GROUP COO
Paulo Bengson

Paulo oversees regional operations of Deliverree Group with a focus on rapid expansion of fleet and operational excellence.



COUNTRY DIRECTOR
June Rueangkirianya

June manages Deliverree's team in Thailand with responsibility for service and business development efforts to serve local and international businesses.

We are an Thai company fully licensed by Deliverree Group and supported by a strong team and managers with regional logistics experience.



IN THAILAND
SINCE 2015

CONTACT US



Live Chat



business.th@deliveree.com



+662 105 4400



Bangkok Office

555/62-63 SSP Tower 1,
22nd Floor Soi Sukhumvit 63
(Ekamai) Klongton Nuea, Wattana
Bangkok 10110 Thailand



Chonburi Office

19/10, Sukhumvit Rd,
Si Racha District,
Chonburi 20110, Thailand

OR BOOK NOW

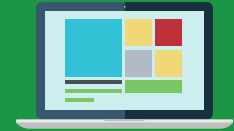
Click
any icon



Install App



Install App



Web App

